



RECON 6 POD

Marine Coaxial/Full Range Enclosed Speaker System
OWNER'S MANUAL

PRECISION | INNOVATION | DURABILITY

www.wetsounds.com

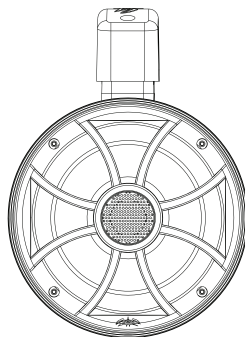
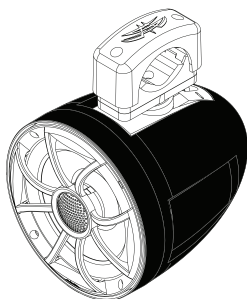
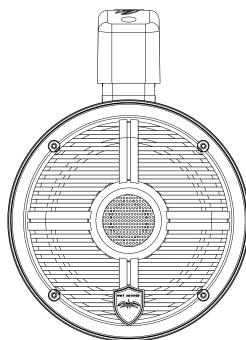
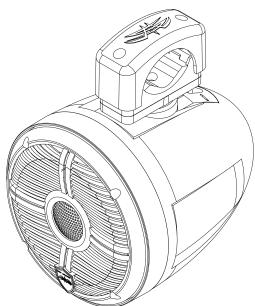
1

THANK YOU FOR PURCHASING WET SOUNDS!

Congratulations! Thank You for purchasing the
Wet Sounds RECON 6 POD Enclosed Speaker System.

RECON

S E R I E S



Please take a moment to read the instruction manual
& connection guide before starting the installation.
If you have any questions or concerns, please contact a certified
Wet Sounds dealer or Wet Sounds Tech Support:



1-877-WET-SPKR (1-877-938-7757)

www.wetsounds.com

Wet Sounds RECON 6 POD Enclosed Speaker System. Operations / Installation Manual

Wet Sounds professional marine audio products represent the ultimate in high performance marine audio. Wet Sounds products are specifically engineered to withstand the rigorous marine environment.

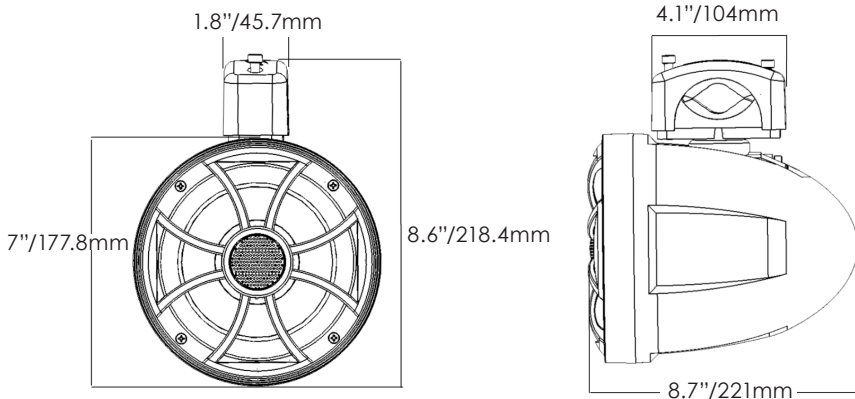
RECON 6 POD Enclosed Speaker System.

The RECON 6 POD is equipped with a 1" titanium dome tweeter mounted on the grill, which keeps the mid-woofer sealed eliminating any chance of water intrusion through the pole piece. RGB LED lighting is included on the underside of the tweeter for a wide variety of colors to be viewed on the cone. The RECON 6 POD is a rugged housing with an integrated composite clamp allowing 360-degree rotation for the most flexible mounting available in a Marine grade 6" pod. The clamp can accommodate up to a 2" round diameter pipe, or can be flat deck mounted if desired. The adjustable housing ring allows the align the grill at any mounting angle. The RECON 6 POD is available in a Black Housing with Silver Grill, or a White Housing with White Grill.

Specifications:

RECON 6 POD

Power Handling RMS	60 Watts
Power Handling Peak	120 Watts
Frequency Response	40Hz – 20kHz
Sensitivity (@ 1 Watt/1 Meter)	89 dB
Weight (each – including clamp)	4.2 Lbs
Dimensions	8.7" (d) x 7.0" (w) x 8.6" (max hang height)

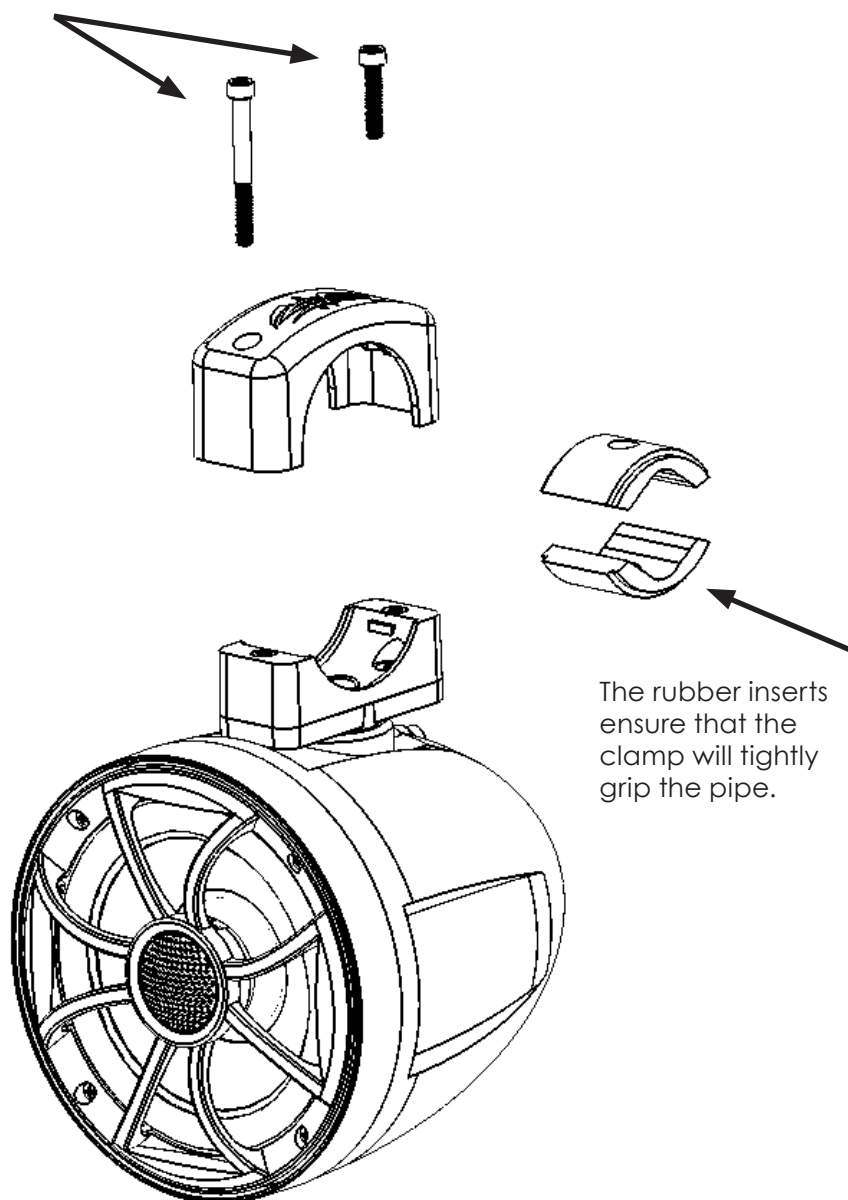


Wet Sounds RECON 6 POD Enclosed Speaker System. Operations / Installation Manual

3

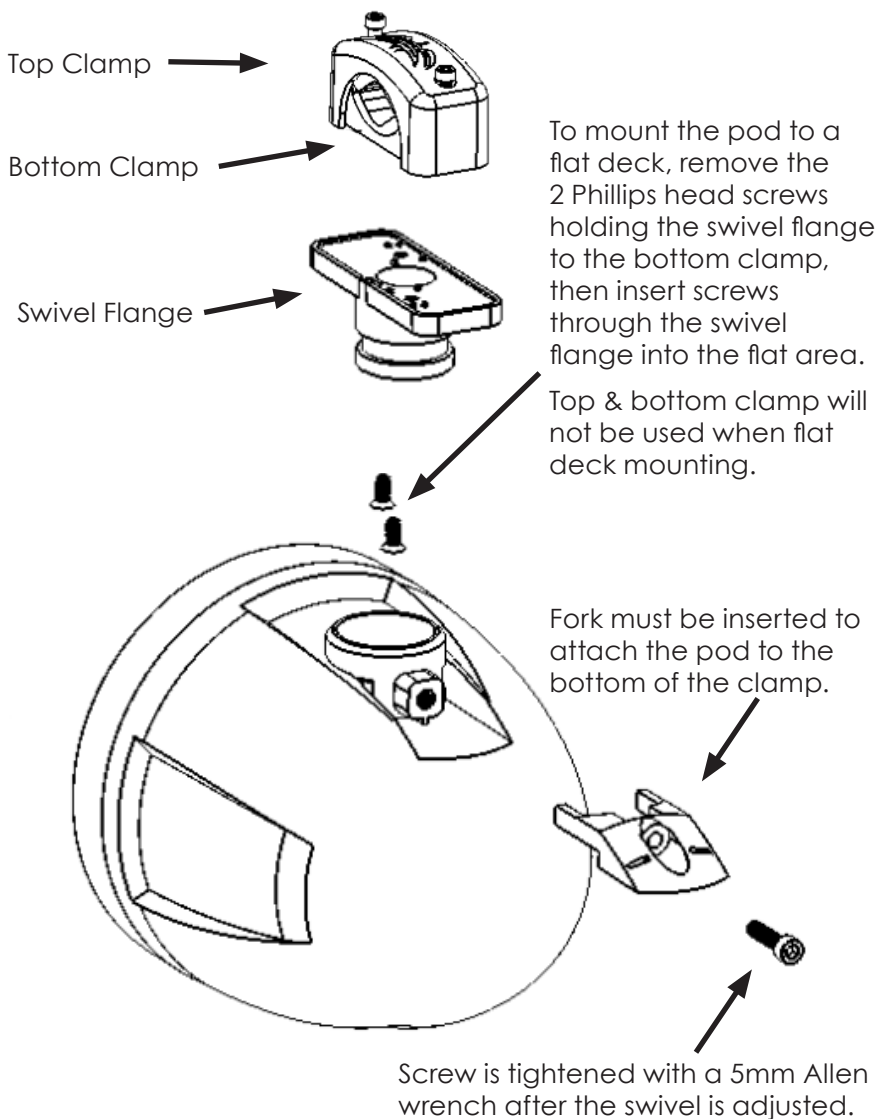
INSTALLATION Mounting to a round pipe up to 2"

Kit is equipped with 2 different lengths of bolts to attach the top clamp to the bottom clamp - depending on the diameter of the mounting pipe. Use a 5mm Allen wrench to tighten the clamp bolts.



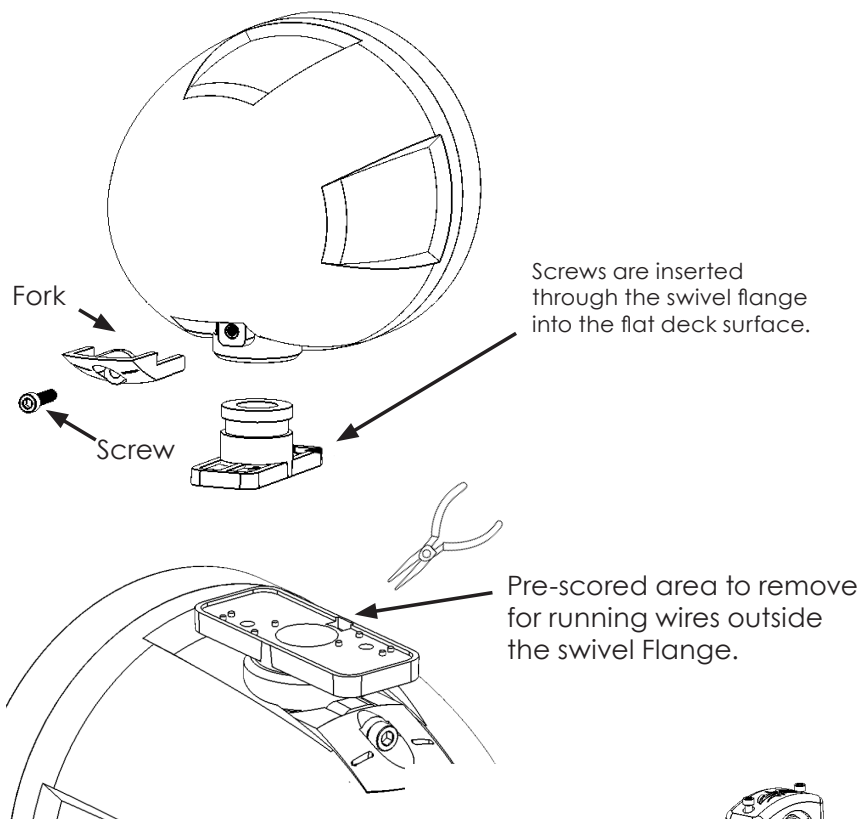
Speaker/RGB wires may be inserted from the top of the Pod through the center of the Swivel Flange & Bottom clamp, then through a hole in the mounting surface or pipe.

To run the wires without drilling a hole in the surface or pipe, there is a pre-scored area on the side of the Swivel Flange & the bottom clamp to remove, allowing the wires to pass through.

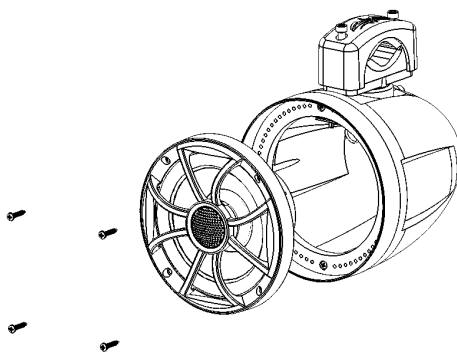


RECON 6 POD mounted on a Flat deck surface

The Pod is fixed by the inserting the Fork & Screw after the Swivel Flange is mounted to the flat deck surface. 360 degree swivel is possible. Wires can be either run through the center of the Swivel Flange through a hole in the flat deck. For no hole drilling, use the pre-scored area to remove tab take a pair of pliers or others sharp object to break tab & run wires outside the Swivel Flange.



If mounting the Pod at an angle or inverted, simply remove the 4 Philips head screws holding the speaker in the Pod, then rotate the speaker so that the grill is straight. Then re-insert the 4 screws.



What This Warranty Covers This is a "limited" warranty. This warranty covers any defect in materials and workmanship. This warranty only covers the original purchaser and is not transferable. This warranty is also only valid if the original purchase was made from an authorized Wet Sounds TM dealer.

How Long Coverage Lasts This warranty extends for 2 years from the date of purchase. It is recommended to REGISTER your warranty online within 45 days of purchase at www.wetsounds.com – click on "warranty registration".

What Is Not Covered This warranty does not cover fading or discoloration caused by exposure to sunlight or chemicals such as ammonia, household bleach, or any cleaning material that contains abrasive substances. Wet Sounds, Inc. does not cover the expense for removal or re-installation. Additionally, shipping TO Wet Sounds, Inc. must be paid for by the purchaser. This warranty is void and inapplicable if Wet Sounds deems that the product was abused or misused; including but not limited to damage caused by accident, mishandling, improper installation, removing the inline fuse on the power connection, negligence, normal wear and tear, excessive water or heat damage, freight/shipping damage, or products that have been disassembled by anyone other than Wet Sounds technical staff. Wet Sounds will not be responsible for any incidental or consequential damages, except to the extent provided (or prohibited) by applicable law. This warranty gives you specific rights, and you may also have other rights which vary from state to state.

What Wet Sounds, Inc. Will Do Wet Sounds, Inc. will repair any part of your product that proves to be defective in materials or workmanship. In the event repair is not possible, Wet Sounds will replace the product in question. If it is deemed necessary Wet Sounds, Inc. will either replace the entire product with a refurbished unit or it will be replaced with a model that is similar in price if that model is no longer available. Labor costs and materials needed to complete this service will be at No Charge to the purchaser. Additionally, return shipping FROM Wet Sounds, Inc. to the purchaser will be paid for by Wet Sounds.

How To Get Service Contact Wet Sounds, Inc. either by phone (877-938-7757) or by email (warranty@wetsounds.com). A service representative will assist you in confirming that the problem you are experiencing is caused by a defective product and if that product is covered under warranty. The service representative will issue you a Return Manufacturer's Authorization (RMA) and other details to obtain service for your product.

DO NOT RETURN YOUR PRODUCT WITHOUT THE PROPER RETURN AUTHORIZATION (RMA)!

Internet Warning Wet Sounds, Inc. products sold on any non-authorized web site or internet auction site are void of any and all manufacturer's warranty. Please contact Wet Sounds (877-938-7757) or visit our web site (www.wetsounds.com) for a list of authorized online sellers or to find an authorized installing retailer near you.



www.wetsounds.com

877-938-7757

Wet Sounds RECON 6 POD Enclosed Speaker System. Operations / Installation Manual



WET SOUNDS INC.
www.wetsounds.com
877-938-7757

10621 S. Sam Houston PKWY W, Suite 100
Houston, Texas 77071
USA

PROUDLY 
DESIGNED IN USA